

# Photographic Society of Vineland 2014

## 2014 Summary of Assigned Contests and Changes to Competition Formats

The Board Members of P.S.V. have developed the 2014 contest and program schedule that will be published in our 2014 program. In addition, there are a few changes to our competition formats and five assigned contests. This document will outline the changes, provide clarity for the assigned contest subject matter, and provide review on some basic P.S.V. historical guidelines.

**Contests:** There will be an open contest, for both Salon and Exhibition categories, for digital projection each month from January through December. In addition, there will be five (5) "Assigned" digital projection contests during the year. They will be held in January – Abstracts, April – Moving Water, July – Rustiques, October – Sand, and December – Night Photos. These will be a different digital projected contest in addition to the open and there will be no differentiation between Salon/Exhibition in the assigned contests. Any wins by an Exhibition maker in an assigned contest will not count toward "moving up to Salon" wins. There will be four (4) print competitions during the year. They will be held in February, May, August, and November. The print competitions will be "open" contests, one group (no Salon/Exhibition differentiation, B&W and color combined) and be held in addition to the scheduled open digital projection contests.

**Guidelines for acceptable entries in assigned contests:** (typical examples)

**January 9th: Abstracts** - An entry that exemplifies the use of photographic technique to capture an image that uses lines, color, shapes,, simplicity, etc., and their relationship to one another, to produce results that break away from the traditional representation of physical objects or recognizable images. Usually, a successful image does not represent the subject in a literal way, and communicates through form, color, curves, patterns, etc.



**April 3<sup>rd</sup>: Moving Water:** an image that captures water in a state of movement. Generally speaking, water movement photos are more successful than water photos that freeze the action of the water.



**July 10<sup>th</sup>: Rustiques** – an image/composition that portrays or captures an object, small or large, in a state of physical rust. Objects that are the color “rust” are not included in this category.



**October 2<sup>nd</sup>: Sand** - An entry that contains the element of sand, whether predominant in the composition or serving a subservient role. Sand must be an identifiable element of the image.



**December 4<sup>th</sup>: Assigned – Night Photos –Straight from the Camera:** An entry that captures the essence of nighttime, scenes at nighttime, or illuminated buildings/objects. Sunsets and sunrises are not included in this competition.



At the conclusion of the entry deadline for the assigned contests, the three contest administrators will review the submitted contest entries for compliance to “assignment”. If an entry is deemed not to comply, the maker will be given a chance to comment on the entry, and then the entry may or may not be deleted from the contest.

## Additional Information:

All winning 1<sup>st</sup>, 2<sup>nd</sup>, 3<sup>rd</sup>, and HM's from all contests are eligible for the appropriate Year End Contest, regardless of the Salon, Exhibition, assigned, or open contest they won an award. There will be four Year End contests: Salon Digital Open, Exhibition Digital Open, Digital Assigned, and Print Open. The Salon Year End winner will appear on the following year's cover, the Exhibition 1<sup>st</sup> place will appear on the rear cover, and all other 1<sup>st</sup> place winners will appear within the program.

The 3<sup>rd</sup> Thursday programs scheduled so far are:

January - "Explanation of Assigned Subjects" by Tom Holding

February – "Painting with Light" by Scott Wheaton

March - "Submitted Entry Critique Session" by Tom Holding Two entries per person for each session to be submitted through the "unofficial" contest method.

April – "Basic Photo Editing" by Steve Schneiderman

June – "Photographing Fireworks" by Scott Wheaton

August – How to Critique/Judge" by Tom Holding

September – "Night Photography"

November - "Table Top Set Up Photography" by Claire Lelli

There are 2 TBA's 3<sup>rd</sup> Thursday program dates. October 3<sup>rd</sup> Thursday is a dedicated Board Meeting.

One day and multi-day field trips are dependent on members stepping up and leading a session. Ideas so far include: John leading a day trip to the Delaware Bay area, Jamie leading a trip to the Renaissance Fair, a model shoot at Jen's, TBA Longwood Gardens.

Please see the 2014 PSV program for a concise summary of meeting information.

## **Existing entry criteria:**

Images submitted for competitions shall originate as photographs produced by the entrant captured either via photographic emulsion or acquired digitally. The submitted entry, both image and manipulation, must be the work of the entrant. By submitting an entry, the photographer certifies the work as his/her own. The addition of a border is acceptable. Each image submitted must have a unique title from any others by the same maker.

Once an image has won 1<sup>st</sup>, 2<sup>nd</sup>, 3<sup>rd</sup>, or HM in the Salon class, that entry or near identical duplicate image are no longer eligible for competition. A winning image that is significantly altered resulting in a unique different image is eligible. As an example: a color image transformed to B&W is eligible. Changing a border on a photo is not considered altered or acceptable. Once an image has won, it cannot be changed, altered, or re-mounted for the Year End competition; it must be the exact image that won. Entries that have won in the Exhibition group are eligible for re-entry in the Salon group once that member moves up.

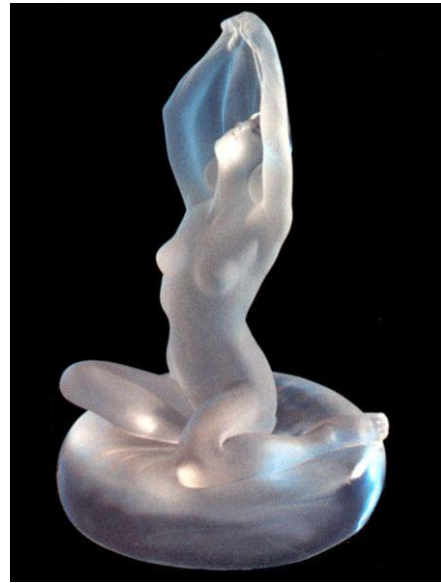
Images of pure art are not permitted in any PSV contest.

Pure art defined: when the art itself is the subject of the image and is used to convey all of the traditional compositional elements and tonal qualities of the photo - unacceptable.

Acceptable: a photo where "art" is one element of several and the art is only part of the composition.



Not Acceptable



Not Acceptable



Acceptable



Acceptable